

MABAS-WISCONSIN *in ACTION*

VOLUME 3, ISSUE 2

SPRING 2012

A quarterly report of MABAS WISCONSIN activities to underscore its value to the community and to foster growth and improvement through the sharing of actual experience

ICE/WATER RESCUE BOX USED - 6 SNOWMOBILERS THRU ICE

BY ALAN MANNEL, CHIEF, BEAVER DAM FIRE DEPARTMENT

It was an hour after sunset on a 30-degree Saturday evening of February 18, 2012. At 6:25pm, the Beaver Dam Fire and Police Departments received a call for four snowmobiles through the ice on **Beaver Dam Lake** and fire and police units were dispatched to Waterworks Park.

Per information reported by 911 callers, responders focused their response to the area of High Island. Responding personnel

immediately realized the severity of this complex situation and initiated appropriate action.

Deputy Fire Chief Matt Christian arrived on the scene at Waterworks Park and initiated the incident command system and took command. EMS arrived on the scene and set up triage and transport branches at Waterworks Park. Firefighters Doug Sackett and Tony Thomas donned ice rescue suits and staffed the rescue hovercraft.

The rescuers responded to the area of High Island and met 4 civilians who had just rescued 2 people from the water and 2 other people who were partially wet from crossing the open water on their snowmobile. Receiving conflicting information from the victims, they learned that there were at least two and possibly three additional persons in the water in need of rescue.



Horicon's squad and Beaver Dam's hovercraft
(Photo from FOX11News@wlu.com)

(Continued on page 2)



Inside this issue:

Division 102 In Action	4
Div 106 Command Vehicles	5
Division Spotlight - Div 134	6
My First MABAS Box	7
Div 115 Command Vehicle	8
A Rare Tender Operation	9
MABAS Division Map	10

G'me a Box! See page 4.

(Photo by Timothy Stein)

PRESIDENT'S CORNER *BY ED JANKE*

MABAS Wisconsin continues to grow and strengthen the operational capabilities of the current 40 divisions. Nearly daily I speak to someone regarding the "MABAS System" and how it has made their lives in emergency services less complicated. Firefighters, Dispatchers, Company Officers and Chief Officers have told me that they take comfort in knowing that if they have an event in their community, extraordinary or not, that they will be able to call for the assistance they need.

Interestingly, in this issue we talk about a significant ice rescue, structure fires, and a tender operation. All required resources that responded as planned; key word, *planned*. The "planning" that takes place when we develop our box cards is what allows the system to work as well as it does. It is good to know that we have a system that will provide the resources that we need, when we need them.

Our Second Annual Command and Dispatch



Conference is fast approaching. Keith Tveit and the Conference Committee have an exceptional program with some great speakers. Registration is open now. Mark your calendars and make reservations for this outstanding conference on August 24-26, 2012.

MABAS-WISCONSIN IN ACTION

ICE/WATER RESCUE BOX USED FOR 6 SNOWMOBILERS THRU THE ICE — CONTINUED

(Continued from page 1)

Having six to seven people in danger of severe hypothermia, two to three of which were also in danger of drowning, the civilian rescuers were asked to transport the two rescued victims and two partially wet people to Waterworks Park where EMS was waiting.

Command requested MABAS box alarm #12-01-5 through **Dodge County MABAS Division 129** which brings in additional resources to deal with the situation on scene and staffs our station with both a mutual aid EMS and fire crew in case of a second incident in the community. Law enforcement personnel secured Waterworks Park and began the personnel accountability and public information process.

Fire Chief Alan Mannel arrived on the scene and, after conferring with Deputy Chief Christian, chose to establish an area command on the West side of the lake as the actual incident was closer to that location. Deputy Chief Christian remained in command and the Chief Mannel established West area command with an EMS unit and manpower.

Once the scene was assessed and the safety of the rescued victims was assured, the firefighters on the hovercraft focused their attention on the remaining victims in the water.

The fifth victim was quickly located on the far side of the open 30 to 40 acre "goose hole" (open water in ice cause by a concentration of geese).

Firefighters quickly removed the fifth victim from the water. At this time there were no other visible victims in the water. Firefighters took victim #5 back to Waterworks Park where additional EMS units were waiting.

The hovercraft crew returned to the scene and resumed the search for the yet to be determined total number of victims. The hovercraft crew employed a grid search pattern. Extenuating circumstances made this process even more difficult.

The dark moonless night made situational awareness and maintaining directional bearings very difficult. There was also clothing and debris in the water, as well as large pieces of broken ice floating among the debris. Each piece of ice and debris had to be individually checked. Finally, there were temporary mechanical problems with the hovercraft the crew had to troubleshoot.

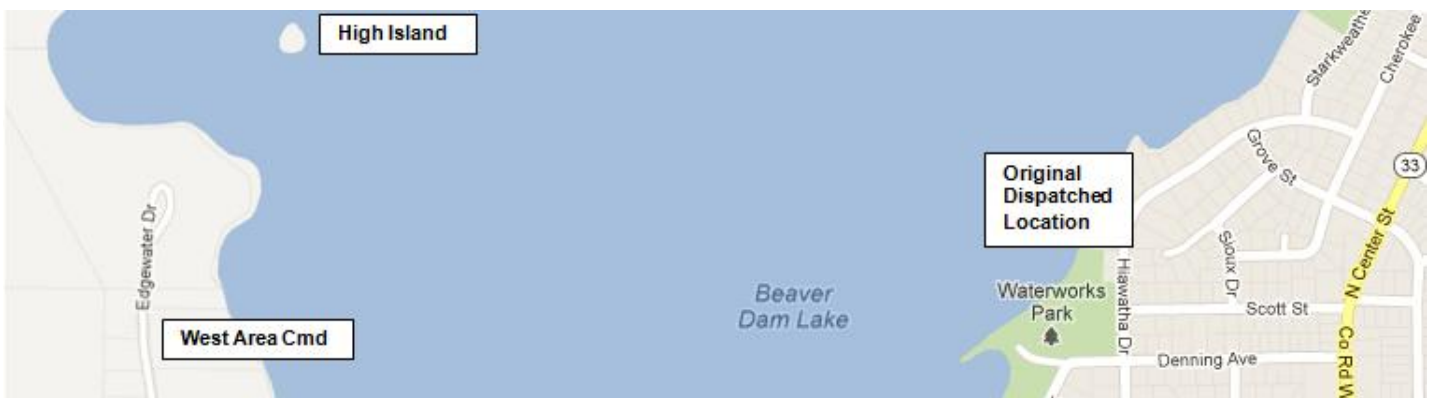


Firefighter Sackett aboard Beaver Dam's hovercraft
(Photo from FOX11News@wlu.com)

After an exhaustive search the victim #6 was located unconscious and face down in the water. Firefighter Thomas entered the water and retrieved the man while Firefighter Sackett positioned the hovercraft to remove the victim. Firefighters loaded the victim into the hovercraft and discovered he was pulseless and non-breathing.

Firefighters elected to go to the closer West side area command on Edgewater Drive where a paramedic unit was waiting. The hovercraft proceeded to the West area command with CPR in progress. Unfortunately, further resuscitation efforts were not successful.

At about this point, thanks to information gathered by law enforcement personnel interviews at the hospital, command determined there were no further victims in the water and the search efforts were discontinued.



MABAS-WISCONSIN IN ACTION

MABAS DIV 102 IN ACTION - STRUCTURE FIRE *BY TIM STEIN*

Shortly after 1:30am on December 24, 2011, a fire was discovered in an apartment above the Corner Connection Bar at 6961 Douglas Avenue in Caledonia (northeast Racine County).



Photos by Timothy J. Stein

The **Caledonia Fire Department** requested a MABAS Box as 2 people were trapped. A 48-year-old man was rescued with critical burns and a 53-year-old perished in the fire.

Fire Departments assisting Caledonia on scene were; South Shore, Racine, Union Grove, Raymond, Oak Creek, Somers, Racine Fire Bells Rehab Support Unit and the Racine County Fire Investigation Task Force.



MABAS DIV 102 IN ACTION - TENDER OPERATION

BY JON KEISER, BATTALION CHIEF, SOUTH SHORE FIRE DEPARTMENT

It was a 55° Saturday afternoon on April 7, 2012, when the **South Shore Fire Department** received a report of structure fire at 11241 Spring Street, which is about 2 miles east of State Highway 20 and I-94. South Shore is a consolidation of the Sturtevant and Mount Pleasant Fire Departments in southeastern Racine County.

The involved structure contained 600 incubating chicks and was about 100 feet from the roadway at

the rear of the property which contained several other large storage buildings and a house. Nearby was another property containing numerous buildings and a house.

While enroute, upon seeing a large amount of smoke and knowing this was a tender operation, I called for MABAS Box 100-102. With this type of situation, you are losing when you get there. My first due response that included an engine and tender (2,500 gallons of water) was not a match for the fire at hand. Conditions escalated very quickly.

The tender fill site was less than 2 miles away; however, with the rural nature of the area, time and



distance were a factor. The first mutual aid tender arrived in 15 minutes, with a similar time gap for each additional tender unit.

Propane tanks in the structure were the most critical concern as they were rapidly heating up until the roof collapsed which allowed an escape for the heat.

As I see it, the keys to an effective use of MABAS are:

- ◆ Having a good relationship with the Dispatch Center
- ◆ Ensuring that the person initiating the Box has a good understanding of MABAS
- ◆ Reacting quickly when you need it



Photos by Timothy J. Stein. These photos and others are located at www.fvrpix.com in the "Featured Galleries Area"

MABAS DIVISION 106 (MENOMONEE FALLS FD) COMMAND VEHICLES

BY JEFFREY S. HEVEY, FIRE CHIEF, VILLAGE OF MENOMONEE FALLS FIRE DEPARTMENT

Unit 2786 responds to Still and Full Still alarm, auto extrication, tech rescue, hazmat and any call that the shift supervisor is required to respond.

The Command Unit contains a Toughbook computer connected to "Phoenix CAD" and monitors the following: I Am Responding, Village GIS, Menomonee Falls Box Cards; 800 MHz radio, VHF Radio (WISCOM), MOBEX to patch simplex 800 to VHF (Red, White and Blue).

The Command Unit also has, spare portable radios, Pulse Ox /CO monitor; EMS Equipment for first response and pre-plan books.

The **Mobile Command Post 2745** responds to a Menomonee Falls MABAS 2nd Alarm. It can respond as mutual aid if requested.

The Command Post also responds to police tactical incidents as it is used by MFFD and MFPD.



Menomonee Falls Mobile Command Post 2745

The vehicle has five ICS seated positions. Each position is set-up for laptop computer use and phone card connections.

MFFD and MFPD have radios for both types of responses.

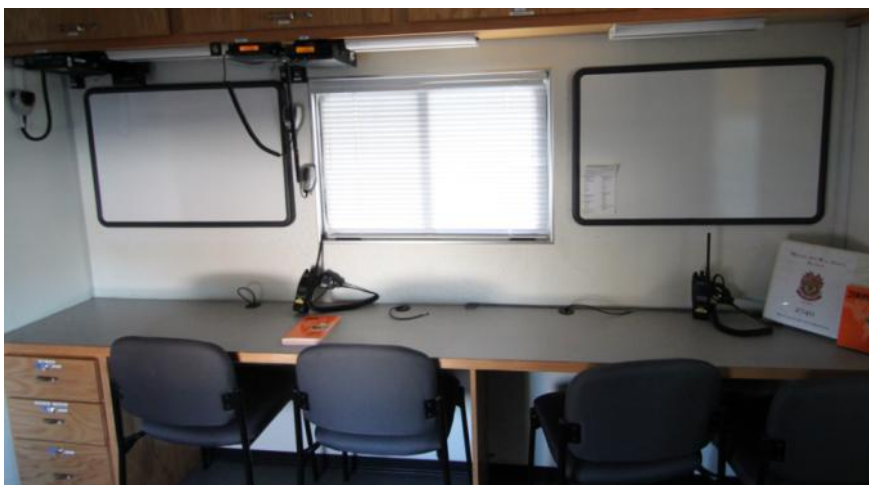
MFFD has two 800 Mhz radios, one VHF radio, one 800 simplex radio. There is also one seated position with computer for a dispatcher to work out of the command post.

The Command Post unit is self-sufficient. For long incidents, we will have our portable 25 Kw generator accompany the unit and provides four days of operation without refueling.

There is also a small 8-person conference room in the rear with an additional 800 Mhz radio and television used for monitoring local news.

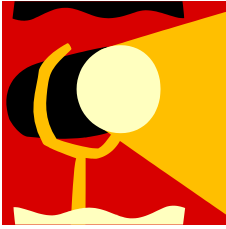


Above: Menomonee Falls Unit 2786 (Photos by Menomonee Falls Fire Dept)



Left: Interior of Menomonee Falls Mobile Command Post 2745

MABAS-WISCONSIN IN ACTION



MABAS DIVISION SPOTLIGHT—DIVISION 134

BY WAYNE NAGY, ONALASKA FIRE DEPARTMENT

What sparked the formation of **La Crosse County as MABAS-WI Division 134** was the obtaining of an IFERN grant by the local Emergency Management Coordinator for base radios and connectivity to the County 9-1-1 Dispatch Center in 2010. With that funding secured, things moved fast.

La Crosse County is home to over 100,000 people, consisting of the cities of La Crosse and Onalaska, four villages and twelve townships. Its western border runs along the Mississippi River spanned by multiple bridges to Minnesota. There is a centralized dispatch center, however, the City of La Crosse uses an 800 MHz trunked radio system with no interoperability to the countywide system.

In August, 2010, La Crosse County was accepted as MABAS Division 134. By June, 2011, the Division went live. All but three departments in the County belong to MABAS and two departments from outside the County are part of Division 134 - Fort McCoy FD in Monroe County to the east and Stoddard FD in Vernon County to the south.

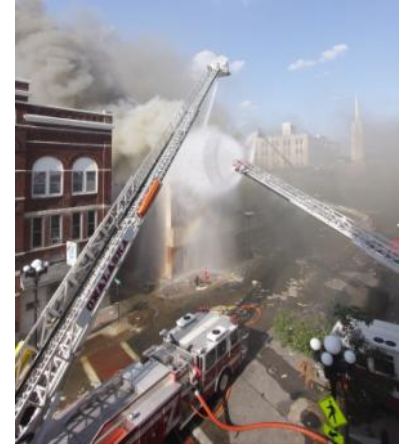


A drill at the La Crosse airport helped identify some issues before going live with MABAS (Photo by Wayne Nagy)

MABAS Used Before Going Live in La Crosse

The La Crosse Fire Department had a history of self-sufficiency, with its four stations. But in 2011, before it was live with MABAS, there were two occasions where the MABAS Box Cards were used.

On May 22, 2011, a tornado struck the area and the La Crosse Fire Department found it needed additional resources. Having MABAS cards already developed, mutual aid was dispatched promptly. This included using Fort McCoy FD's lighting equipment.



The La Crosse Jay Street fire (Photo by Bob Metcalf)

Then, on July 30, 2011, a large warehouse fire required mutual aid and the MABAS Cards were used for efficient dispatching of resources.

THE MABAS JOURNEY FOR LA CROSSE DIVISION 134 STARTED IN 2003

BY GARY SCHMIDT AND PAUL MENCHES, CHIEF, MILWAUKEE COUNTY AIRPORT FIRE DEPARTMENT

Paul Menches came from the Pleasantview Fire Protection District, which was part of MABAS Illinois Division 10 and knew firsthand the value of the MABAS system. In 2003, after becoming Chief of the Onalaska Fire Department, Menches initiated the journey that La Crosse County took to become a MABAS Division.

At the time, there was only 1 career department out of the 8 fire departments in La Crosse County.

The first step was to present the MABAS concept to the County Fire Chiefs. Menches invited the Chief of the South Beloit IL Fire Department to speak. Menches proposed a 12-month implementation plan, of which there were 3 key steps:

1. **A common Incident Command System** - this was an easy task as grants required departments to be NIMS compliant which provided incentive
2. **Standardization of radio channels** - La Crosse

Emergency Management obtained a grant to assist in this.

3. **Have a common accountability plan** - this was relatively easy push for all to use the Passport system.

Getting all departments to be on board with the changes was a slow-go. Then, in 2006, both the La Crosse and the Onalaska Fire Chiefs left their positions, which dramatically slowed down the progress until 2010.

MY FIRST MABAS BOX - DIVISION 134 ONALASKA

BY LT. WAYNE NAGY, ONALASKA FIRE DEPT

On January 21st, 2012, just after sunset, a call came into the La Crosse County Communications Center for the report of a garage fire in Onalaska.

Within 5 minutes, the first arriving unit reported that fire was impinging on the house. At 5:11pm, 20 minutes into the incident, with additional sheds also becoming involved, MABAS Box 3-11 was requested.

Despite a lot of practice and training, there were several things that did not go according to plan.

The largest item that was missed was the establishment of a staging area. The problems caused by this was by the time several incoming units reported that they were approaching the scene and asked for an assignment, the units were already past the desired location/direction for needed placement at the fire.

Another item was that for this first box, local tones were used, not the single MABAS tone. The multiple tone-outs caused radio traffic conflicts and one change-of-quarters

department was never toned out. Finally, the Box was never struck out.

A few weeks later, in the Town of Medary, at a house fire in the middle of the night, MABAS was used again. This time, a single MABAS tone was used for everyone, and dispatching went much smoother. The Dispatch Center even "cued" the Incident Commander for a staging location.



(Photos from Onalaska Fire Department)



MY FIRST MABAS BOX - DIVISION 134 STODDARD

BY LT. WAYNE NAGY, ONALASKA FIRE DEPT

The Stoddard Bergen Volunteer Fire Department Chief Joe Pfaff requested the first MABAS Box alarm in Vernon County on March 17, 2012 shortly after noon.

A brush fire was extending to an auto and soon four structures were involved.

Vernon County does not have IFERN throughout yet and is not a MABAS Division. Stoddard is a small village located 10 miles south of La Crosse. Stoddard has

joined La Crosse County MABAS Division 134 in 2011.

The grass fire originally used the mutual aid resources in Vernon County. As the fire escalated and local resources were getting fatigued, Pfaff was thankful that he was able to count on MABAS resources to prevent major losses.

That first MABAS box was not without hitches. Originally a brush fire box was requested, but when structures became involved, a

structure fire box was requested. There was also confusion over the box numbers. With some resources on both box cards, this became a challenge for the Dispatch Center.

MABAS Wisconsin
General Mailing Address
 PO Box 233
 Camp Douglas, WI 54618

MABAS-WISCONSIN IN ACTION

MABAS DIVISION 115 (CITY OF FITCHBURG FIRE DEPT) COMMAND VEHICLE

BY RANDALL PICKERING, FIRE CHIEF, FITCHBURG FIRE DEPARTMENT

The City of Fitchburg Fire Department Field Support Unit, designated as Car 20, is a first response mobile command center. The unit may be requested through the Dane County Public Safety Communications Center, and is available under MABAS agreement

Locally, if there is a working incident, Car 20 responds and the IC will migrate to Car 20 once it is on scene and set up. If the incident goes to a MABAS 2nd alarm, Dane County's large mobile command unit (DC CV-1) is also dispatched.

Car 20 gets used quite a bit by our PD as well, as long as it is not a major incident. If it is a major Law Enforcement incident, like a homicide or a hostage situation, DC CV-1 is requested.



Specifications:

Chevrolet C5500 4WD Vehicle
Length 28 feet long
Width 8 feet
Height 11 feet
4 Wheel Drive
Leveling System
Separate Rehab and Command Areas

Communications:

Mobile Repeater
1 Mobile Cellular Signal Amplifier
6 Kenwood VHF/UHF Radios
2 Harris XG-100 full spectrum portable radios
On-board 3-line cellular phone system and fax

Other Equipment

2000 watt quartz light tower
Fresh water, hot and cold
Sink and grey water tank
Outside phone line connection
Curbside awning
12,000 watt generator
Exterior TV antenna
DirecTV Satellite Receiver
Complete sets of NIMS and ICS forms and checklists
EMS Jump Kit and AED
Mass Casualty Triage Kits and Patient Tracking forms

Self Supportive Unit

Microwave, Refrigerator, Freezer, Climate Controlled,
Copy Machine, Fax Machine



MABAS WISCONSIN IN ACTION STAFF

Content Editor.....Gary Schmidt (Milwaukee Fire Bell Club)
Format Editor.....Terry Schmidt (Milwaukee Fire Bell Club)
ContributorTim Stein (Racine Fire Bells)
ContributorDrew Spielman (Green Bay Fire Dept)

RARE EVENT: A TENDER OPERATION IN MILWAUKEE COUNTY DIV 107 BY GARY SCHMIDT

Milwaukee County is fully incorporated - there are no townships and the streets of the 19 communities seamlessly cross boundaries. Only in the southernmost 2 cities are there larger tracts of undeveloped land. With Lake Michigan forming the eastern border, several water utilities provide an endless supply of water. Surprisingly, there are two older communities served by the North Shore Fire Department that are not hydranted.

On April 12, 2012, shortly after noon, fire erupted from the rear deck of a one story ranch house with attached garage in the non-hydranted Village of Bayside. The two elderly residents, assisted by a caretaker, were able to self-evacuate. Soon, the entire house was on fire.



Top: an engine, drawing from a Port-a-Tank, supplied several hand lines. The truck behind it was supplied by additional Port-a-Tanks.
Left: a block away, 5 Port-a-Tanks were supplied by the tenders.
Below: the block-long hose layout.
 (Photos by Gary Schmidt)



The North Shore Fire Department responded with a Working Still assignment, which included their 2 tenders and tenders from Div 119 and 106. Shortly thereafter, they sounded MABAS Box 9-02, which brought in 2 more tenders from Div 119 and one from Div 111 along with engines and trucks from Div 107 and 119. Eventually, the MABAS Box was taken to the 2nd alarm level for tenders only (units responded from Div 106 and Div 119).

The fire was stubborn and with a roof collapse and areas of the first floor collapsing into the basement, it took several hours to fully extinguish and overhaul the structure.

DEPARTMENT NAME: North Shore Fire Dept		BOX ALARM TYPE: Structure Fire Non- Hydrant				EFFECTIVE DATE: December 9, 2011		MABAS DIVISION 107	
BOX ALARM # 9-02		LOCATION OR AREA: River Hills and Bayside (F1T, F2T and F5T)				AUTHORIZED SIGNATURE: <i>Robert C. Whitaker III</i>			
LOCAL DISPATCH AREA:									
ALARM LEVEL	ENGINES	TRUCKS	TENDERS	SQUADS	AMBULANCES	CHIEFS	SPECIAL EQUIPMENT	CHANGE OF QUARTERS (Station #)	
STILL	North Shore North Shore	North Shore	North Shore			North Shore			
WORKING STILL	North Shore (RIT) North Shore Thiensville (Fill Site)		North Shore Mequon Menomonee Falls		North Shore ALS North Shore	North Shore Mequon	Special Ops 1 Trailer (REHAB) WE Energies Gas/Electric	Wauwatosa Eng & Chief (1) Mequon Trk (2) Cedarburg Eng (5) Germantown Tndr (1), Grafton Tndr (5)	
MABAS BOX ALARM:									
ALARM LEVEL	ENGINES	TRUCKS	TENDERS	SQUADS	AMBULANCES	CHIEFS	SPECIAL EQUIPMENT	CHANGE OF QUARTERS (Station #)	
BOX	Cedarburg Wauwatosa	North Shore	Cedarburg Grafton Germantown		North Shore	Thiensville Wauwatosa		City of Brookfield Eng (1) West Allis Eng (3) Menomonee Falls Eng (5) Greenfield Chief (2)	
2ND	West Allis Milwaukee	Mequon	Saukville Lannon Port Washington		Germantown (BLS)	West Allis Greenfield	Wauwatosa Utility 5 Milwaukee Fire Bell North Shore Command Post	Butler Eng (1) St. Francis Eng (3) Greenfield Trk & C-Brookfield Chf (2)	



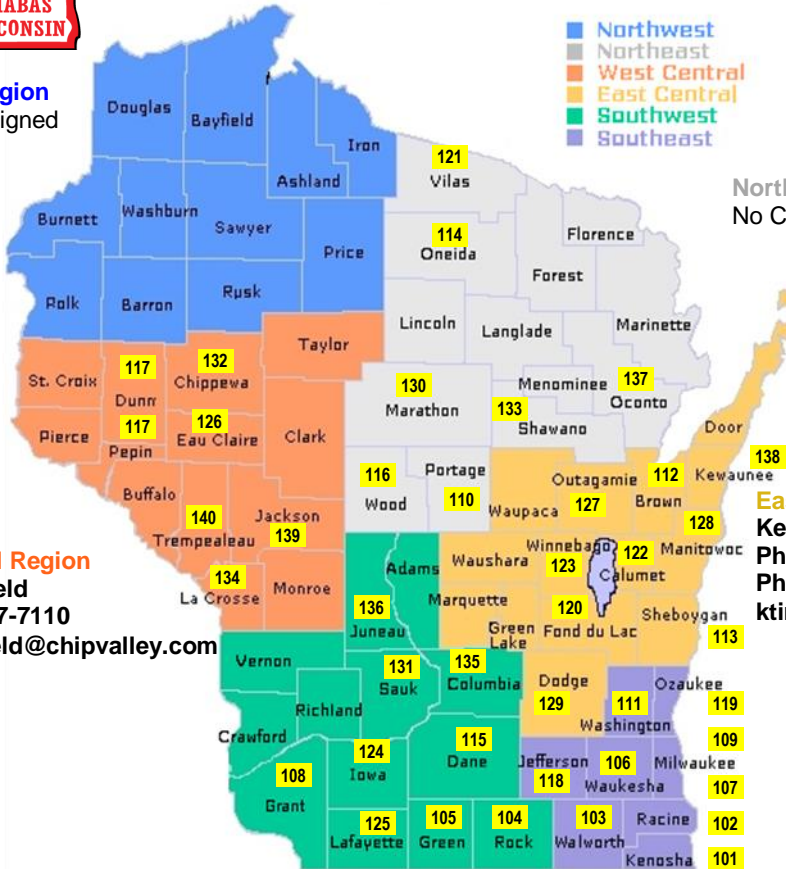
MABAS – Wisconsin

Mutual Aid Box Alarm System

Organized 2004

MABAS Wisconsin Regional Coordinators

Northwest Region
No Coord. Assigned



Northeast Region
No Coord. Assigned

West Central Region
Rick Merryfield
Ph. (715) 577-7110
Rickmerryfield@chipvalley.com

East Central Region
Kevin Timm
Ph. (920) 860-3777
Ph. (920) 553-3713
ktimm@lakefield.net

Red Center
Ph. (T.B.D.)

WEM Duty Officer
Ph. 800-943-0003

Southwest Region
Bruce Hedrington
Ph. (608) 751-6203
Ph. (815) 289-1092
hedrington@ci.beloit.wi.us
brucehedrington@gmail.com

Southeast Region
Bill Rice
Ph. (414) 333-3626
Ph. (414) 471-8456
wrice@wauwatosa.net

Divisions

- 101 – Kenosha County
- 102 – Racine County
- 103 – Walworth County
- 104 – Rock County
- 105 – Green County
- 106 – Waukesha County
- 107 – Milwaukee County
- 108 – Grant County
- 109 – Milwaukee City
- 110 – Portage County
- 111 – Washington County
- 112 – Brown County
- 113 – Sheboygan County
- 114 – Oneida County
- 115 – Dane County
- 116 – Wood County
- 117 – Dunn/Pepin County
- 118 – Jefferson County
- 119 – Ozaukee County
- 120 – Fond du Lac County
- 121 – Vilas County
- 122 – Calumet County
- 123 – Winnebago County
- 124 – Iowa County
- 125 – Lafayette County
- 126 – Eau Claire County
- 127 – Outagamie County
- 128 – Manitowoc County
- 129 – Dodge County
- 130 – Marathon County
- 131 – Sauk County
- 132 – Chippewa County
- 133 – Shawano County
- 134 – La Crosse County
- 135 – Columbia County
- 136 – Juneau County
- 137 – Oconto County
- 138 – Kewaunee County
- 139 – Jackson County
- 140 – Trempealeau County

Fire Service Coordinator
Keith Tveit
Ph. (608) 220-6049
Keith.Tveit@wisconsin.gov

Wisconsin Homeland Security Council
Brad Liggett
Ph. (608) 364-2902

MABAS OPERATING FREQUENCIES

- IFERN
- IFERN2
- MABAS1 (WISCOM)
- MABAS2 (WISCOM)
- MABAS Alerting / intra-Divisional responses
- Alternate intra-Divisional responses
- Inter-Divisional Responses
- Contact with Wisconsin Red Center
- Regional Coordinators - WEM Coordination*
- *Future use